

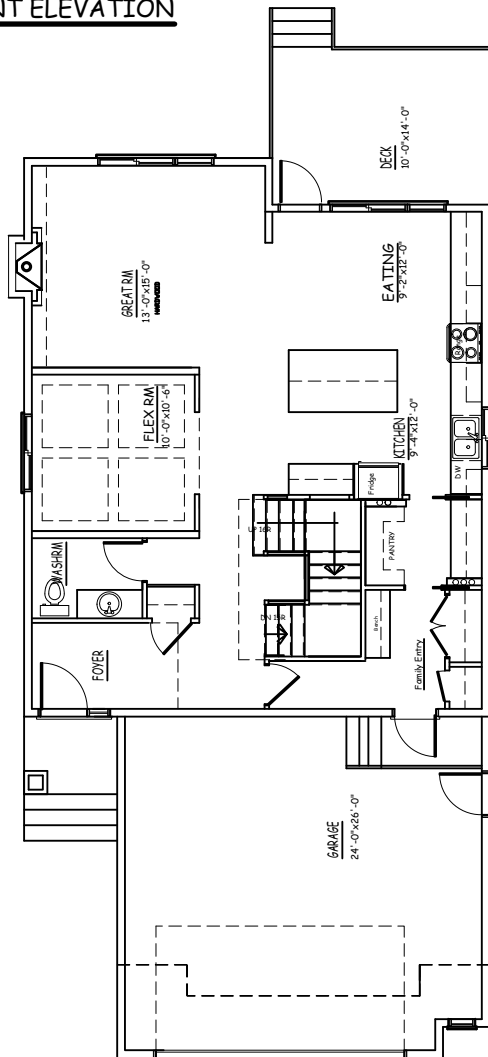


FRONT ELEVATION

## Quick Possession

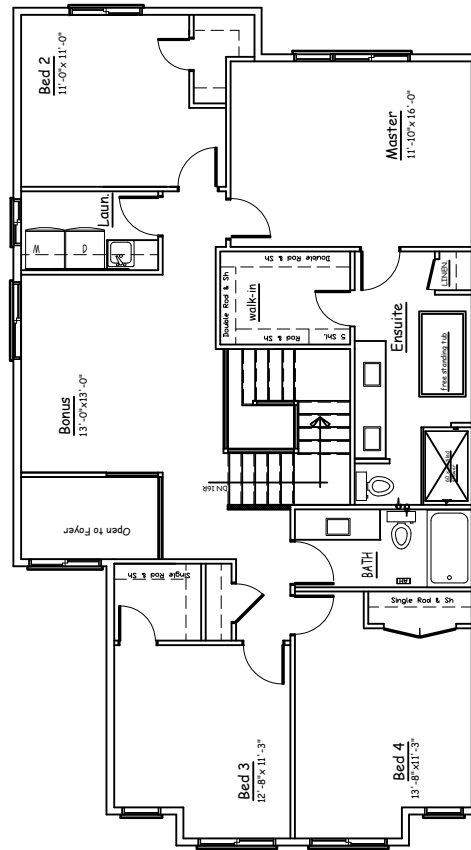
Address: 6507 Crawford Place  
Model: Hayward

- Options:
- Craftsman Exterior
  - 4 Bedrooms
  - Oversized Garage with mandoor
  - Large Kitchen Island
  - Gas Fireplace
  - Drop zone cabinet in Entry
  - Basement stair open to the main floor
  - Two Storey Foyer
  - Ensuite Upgrade Package
    - Stand alone tub
    - Oversized tile shower
  - Flex Room with coffered ceiling



MAIN FLOOR - 1038 SQ.FT.

TOTAL 2440 SQ.FT.



UPPER FLOOR - 1402 SQ.FT.



(780) 566 0653  
millstreethomes.ca