

Name: Langdale 3

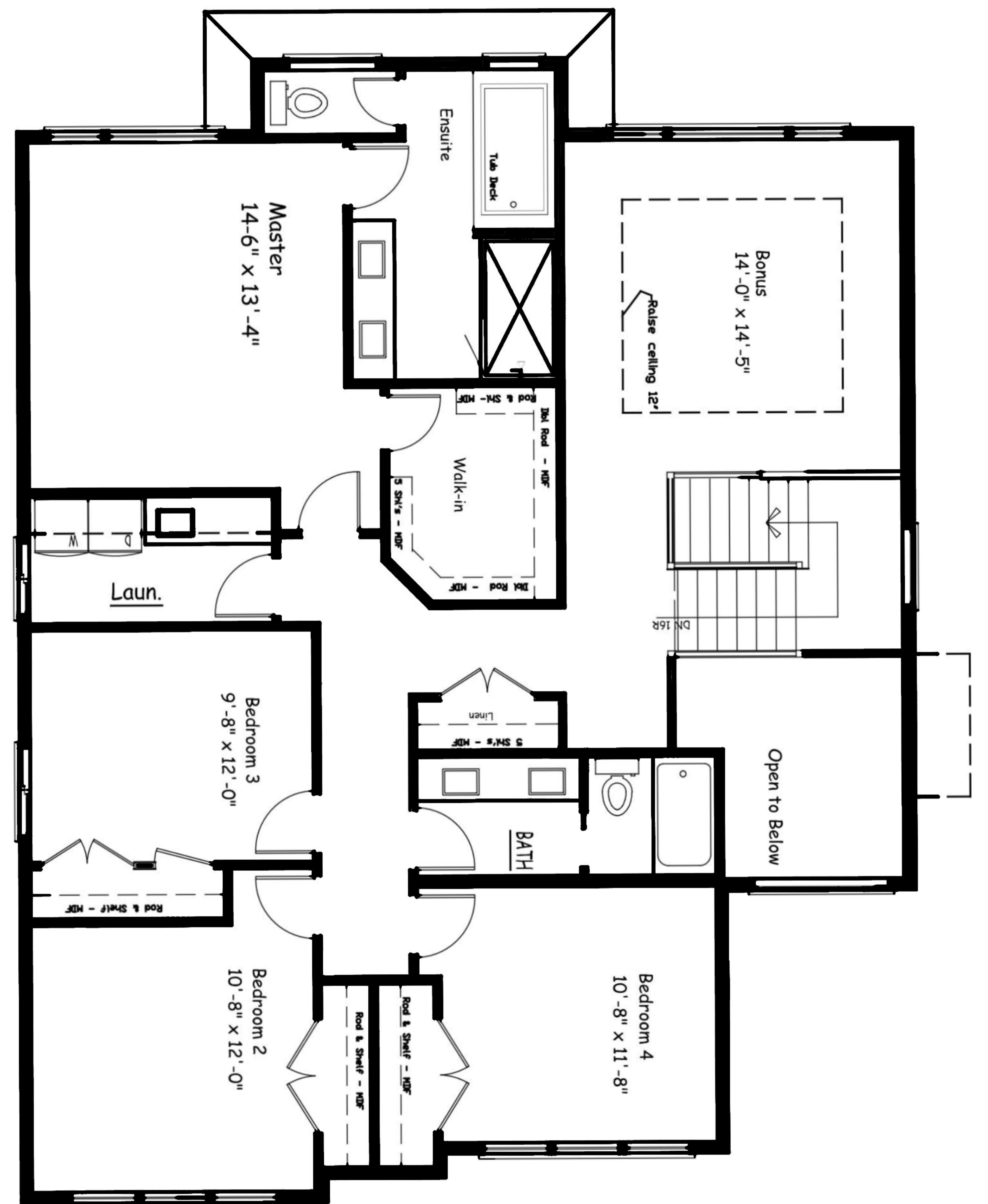
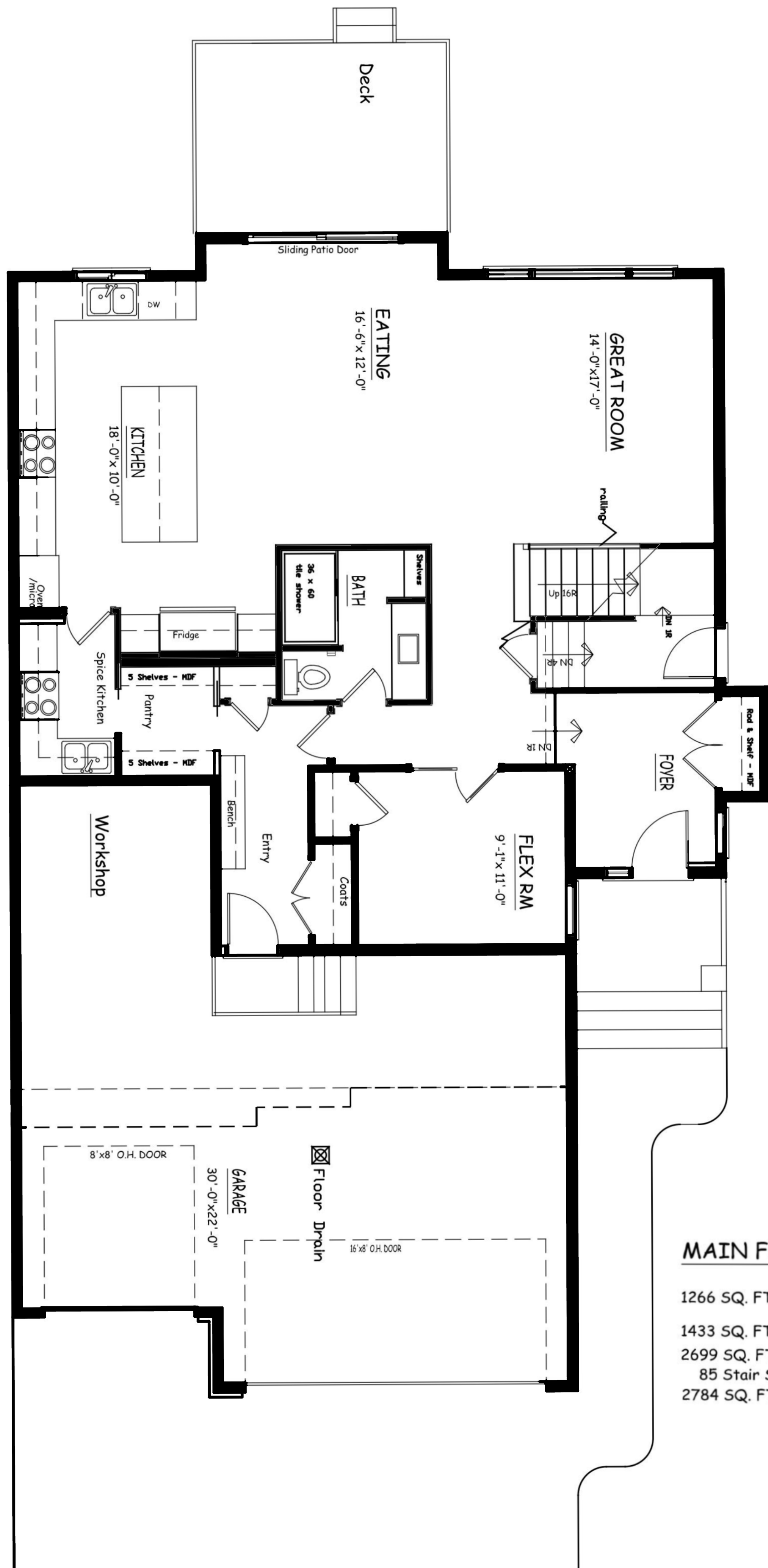
Size: 2784

Features:

- Triple Garage with Workshop
- 4 Bedroom upstairs
- Large Bonus Room
- Main Floor Flex Room
- Main Floor full bath
- Two Storey Open to below Foyer



Front Elevation - Craftsman



MAIN FLOOR

1266 SQ. FT.
1433 SQ. FT. Upper
2699 SQ. FT. TOTAL
85 Stair SQ. FT. Upper
2784 SQ. FT. TOTAL

