



CRAFTSMAN STYLE

The Millar Series

2200 – 2300 Square Feet
3 Bedrooms

The Millar is a great family home. This home features a very large main floor Great Room completely open to the Kitchen and Dining that range across the full width of the house. All with great backyard views.

The star of this home is the large main floor Great Room. Open to the Eating and Kitchen the Great room features a stylish fireplace and TV space.

The Kitchen features a large island which is designed to be the center of you family activity.

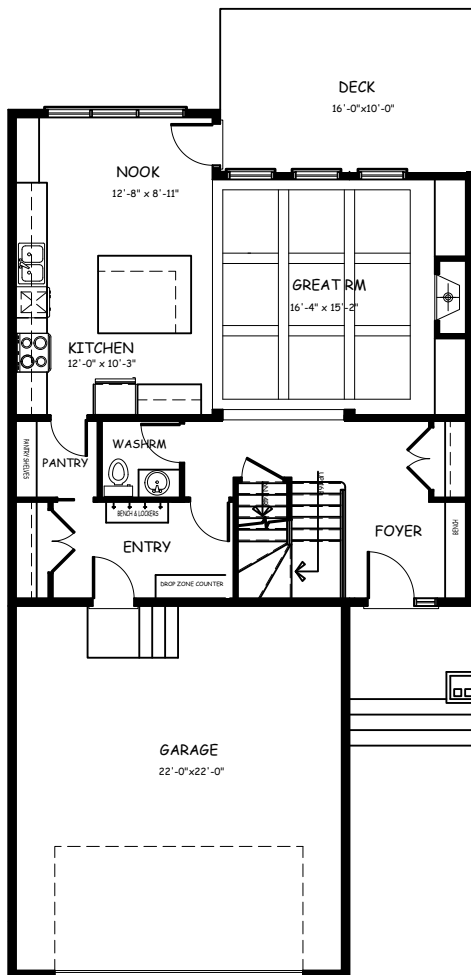
The Family Entry area features a bench with coat hooks and a thoughtful drop zone counter to make it easy to unpack after a long day. It is accessible from the Kitchen to make unloading groceries a snap.

The Upper Floor laundry is a dream. Large enough to handle all you can throw at it. It features a space for ironing and sorting.

Spoil yourself in the luxurious Ensuite with an oversized walk-in shower and large soaker tub.

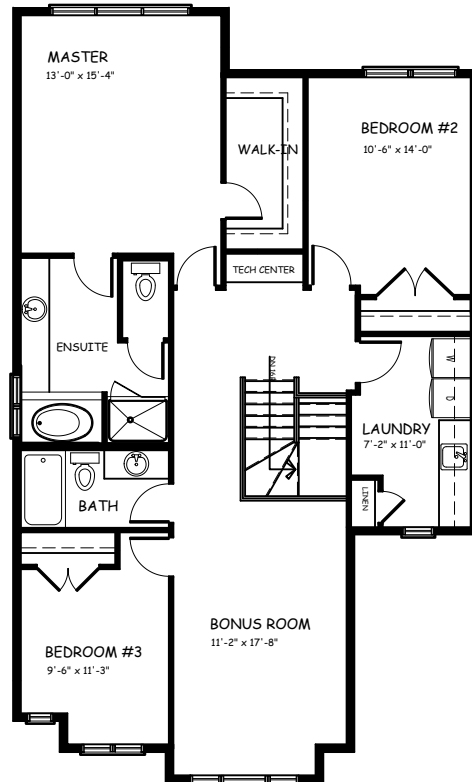
The Master features a walk-in closet and an additional storage closet.

The Bonus Room has a great backyard view and lots of wall space for your entertainment system. There is also an option for a built in Tech desk for the kids to do homework or connect online.



MILLER - MAIN FLOOR PLAN OPTION A

943 SQ.FT.
TOTAL 2220 SQ.FT.



MILLER - UPPER FLOOR PLAN OPTION A

1277 SQ.FT.



(780) 566 0653
millstreethomes.ca