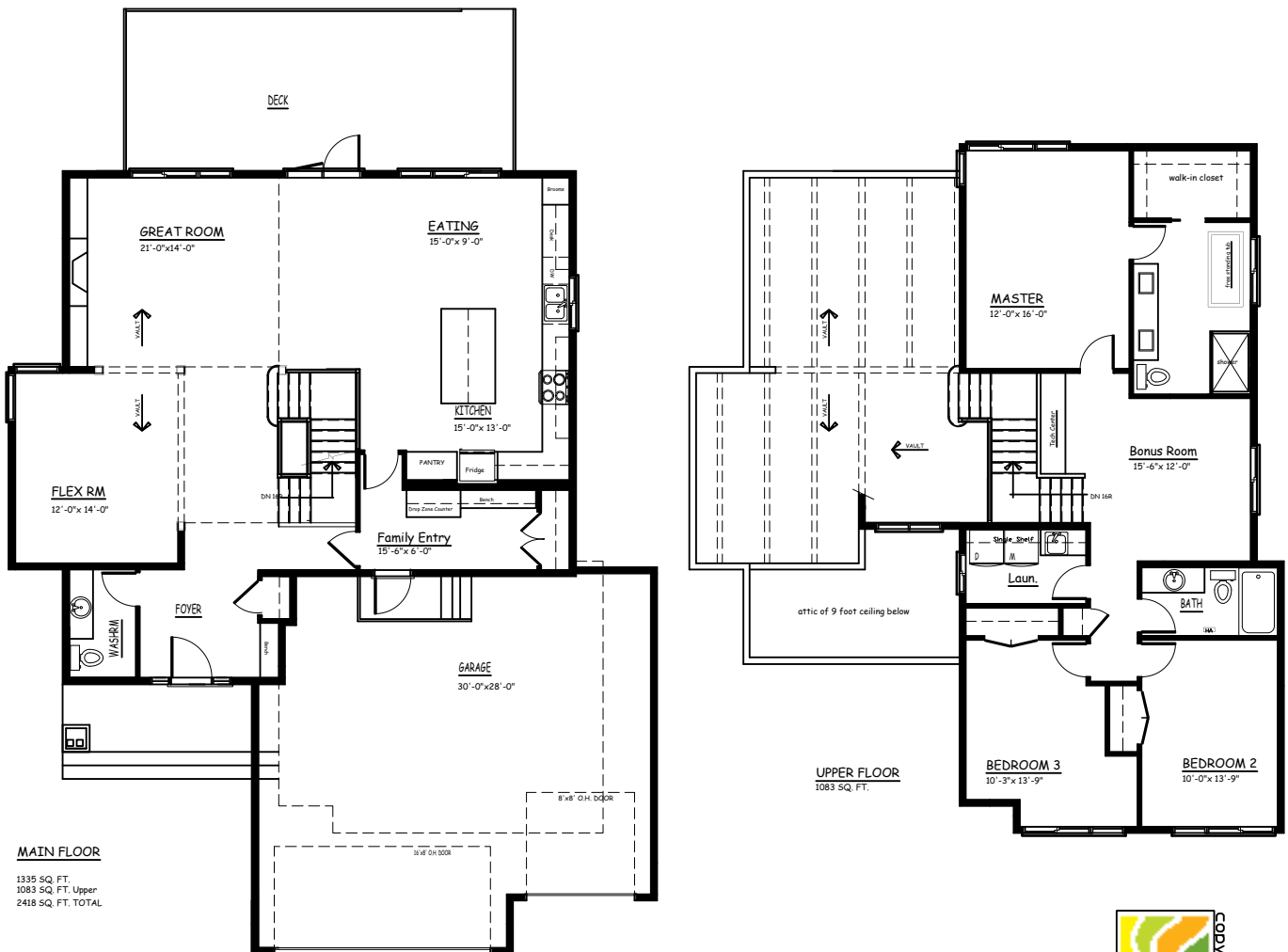


The Westview



Size: 2418 Square Feet
 Price: Starting at \$599,800 Inc. Lot and GST

- Features:
- Mid-Century Modern Treatment
 - Triple Car Garage with mandoor
 - Rear Deck
 - Kitchen Upgrades
 - Lighting Package Upgrades
 - Finish Hardware Upgrades
 - Drop zone cabinet in Entry
 - Walk-out Basement (undeveloped)
 - Vaulted ceiling with exposed beams and rake windows
 - Plumbing Upgrade Package



MAIN FLOOR
 1335 SQ. FT.
 1083 SQ. FT. Upper
 2418 SQ. FT. TOTAL

UPPER FLOOR
 1083 SQ. FT.



(780) 566 0653
 millstreethomes.ca

*Marketing drawings only, E & O E, see contract documents.