

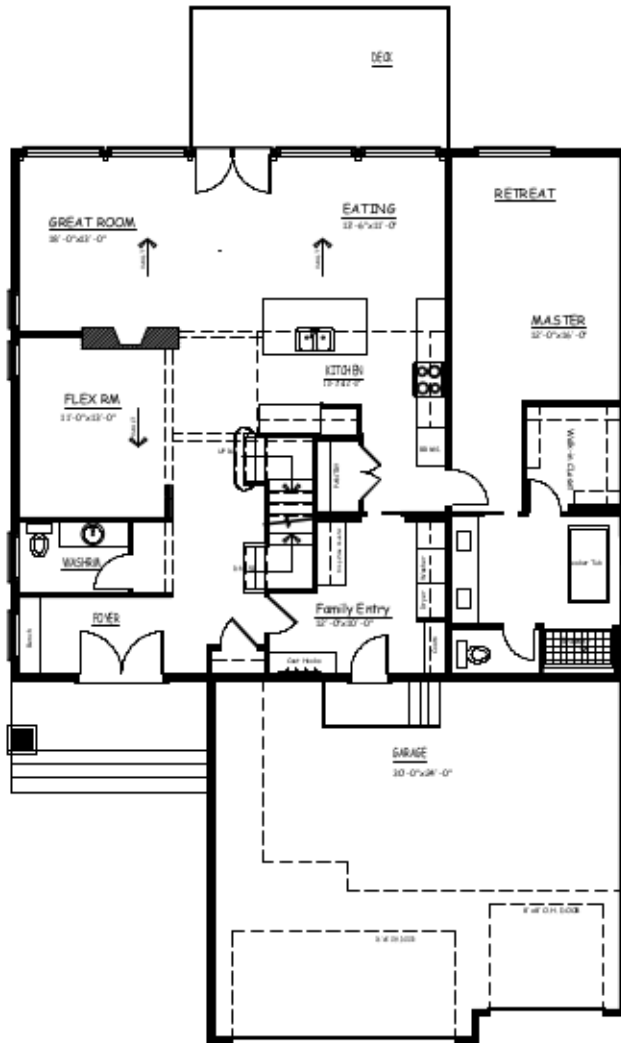
# Ready Home

Model: Westward  
Size: 2700 Square Feet

- Westward Model Base  
Plus The Following Included Show Home Options:
- Mid-Century Modern Treatment
  - Triple Car Garage with mandoor
  - Rear Deck
  - Kitchen Upgrades
  - Lighting Package Upgrades
  - Finish Hardware Upgrades
  - Drop zone cabinet in Entry
  - Walk-out Basement (undeveloped)
  - Vaulted ceiling with exposed beams and rake windows
  - Plumbing Upgrade Package

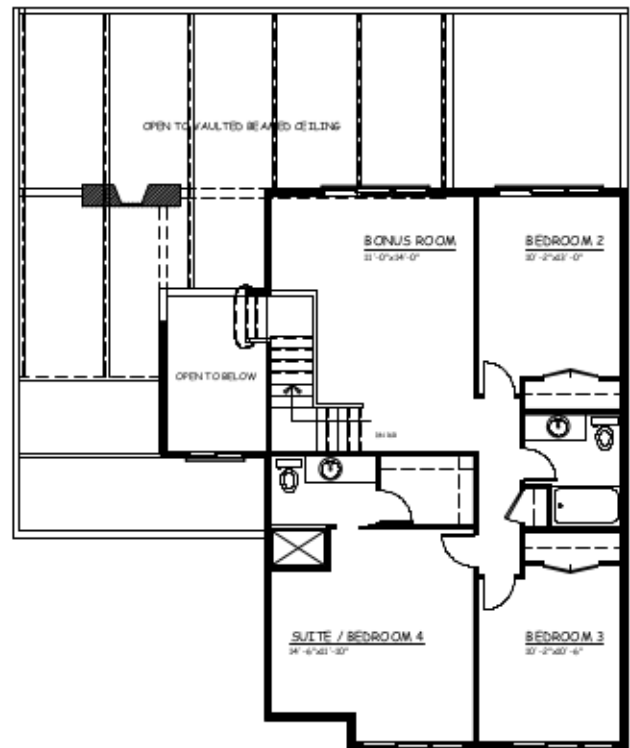


MID-CENTURY MODERN STYLE



MAIN FLOOR

1672 SQ. FT.  
2700 SQ. FT. TOTAL



UPPER FLOOR

1028 SQ. FT.



copyright

(780) 566 0653  
millstreethomes.ca

\*Marketing drawings only, E & OE, see contract documents.