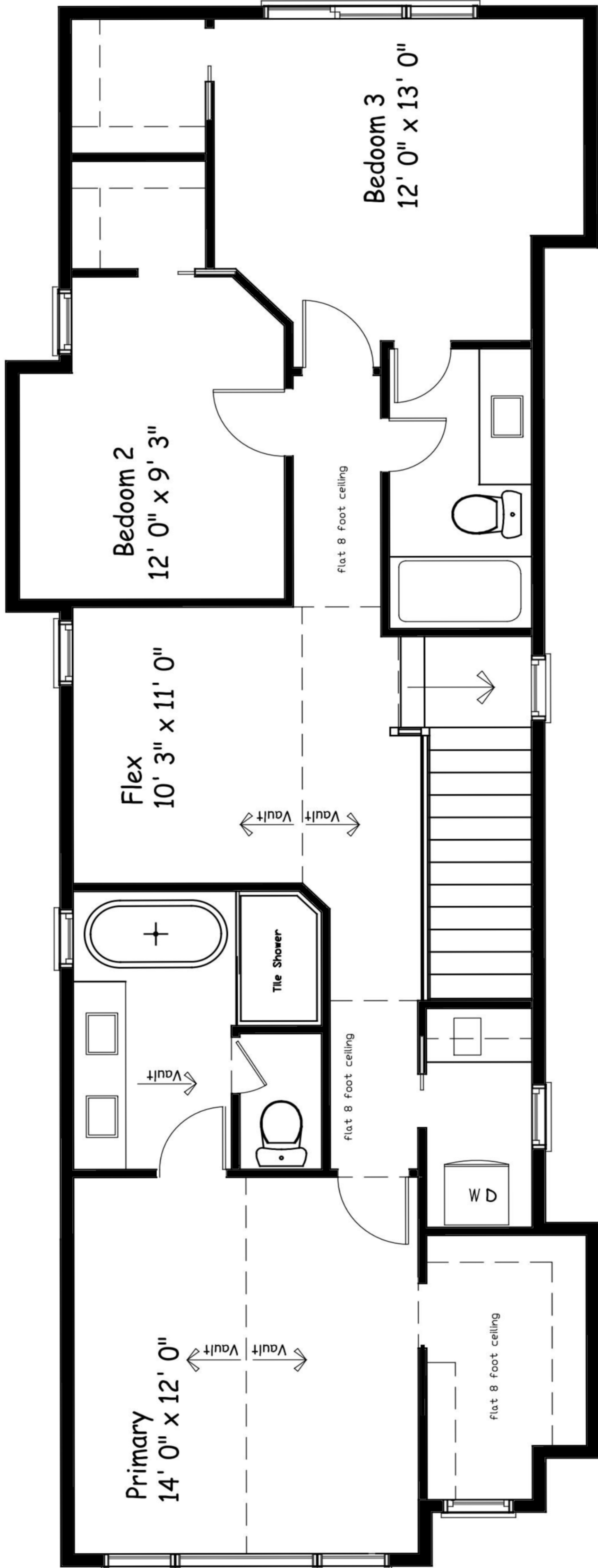


Front Elevation

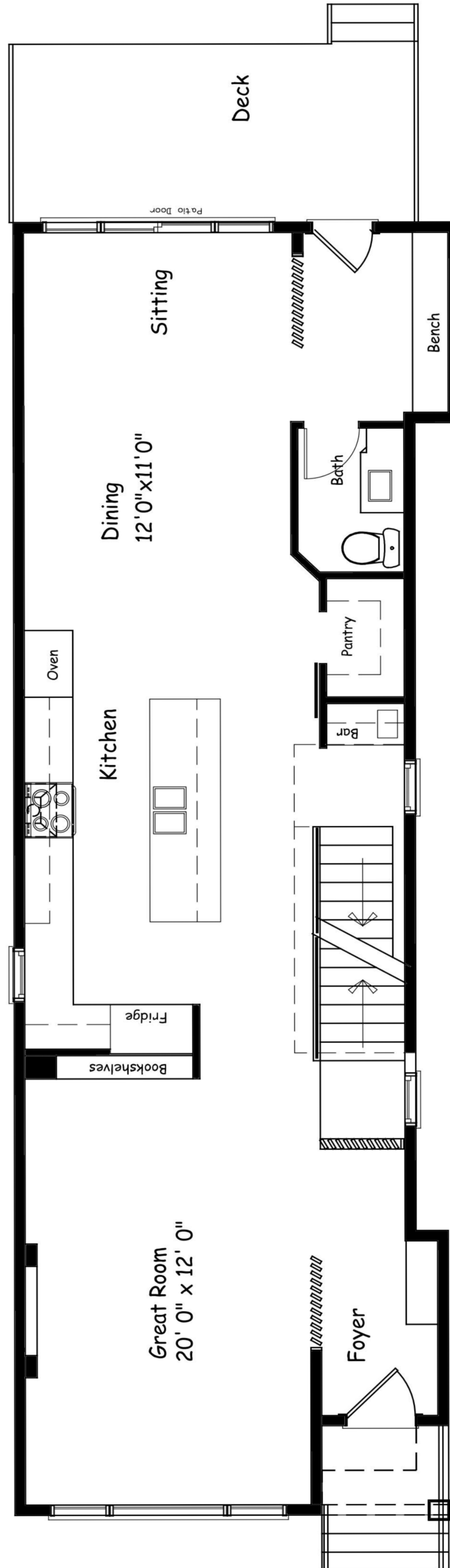
Name: Jasper B  
 Size: 2030 Sq.Ft.

Features:

- Large open Great Room
- Extended Kitchen island with seating
- Bright Dining area with a sitting room
- Rear entry features a drop zone bench
- 3 Bedroom on the second floor
- Large bright Primary Bedroom
- Ensuite features a freestanding tub and walk-in shower
- Large walk-in closet
- Second floor Laundry Room
- Open second floor Bonus Room with vaulted ceilings



Upper Floor  
 1029 sq.ft.



Main Floor  
 1001 sq.ft.  
 Total - 2030 sq.ft. RMS

